

FP120-100

Electrical Specifications (@25C)

1. Maximum Power: 12.0 VA
2. Primary Voltage:
 - Series: 230V @ 50/60 Hz
 - Parallel: 115V @ 50/60Hz
3. Secondary:
 - Series: 120.0VCT @ 0.100Amps
 - Parallel: 60.0V @ 0.200Amps

Description:

The FP120-100 is part of a series which has a long history of reliable service in the field, made from a proven design and constructed with UL recognized materials.

Construction:

Wound on two dual channel nylon bobbin. Materials are UL recognized, Class B (130° C) rated.

Safety:

These products are 100% hipot tested with an insulation of 2000V between primary and secondary windings and 1500V between the primary / secondary windings and the core.

Agency File:

UL: File E53148, UL 506, Class B General Purpose Transformer,
cUL: File E53148, UL 506, Class B General Purpose Transformer, Canadian Use



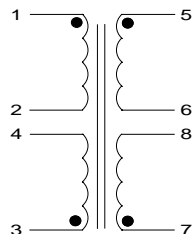
Dimensions:

| A | B | C | D | E | F |
|-------|------|-------|-------|-------|------|
| 2.500 | 2.00 | 1.062 | 0.267 | 0.500 | 2.00 |

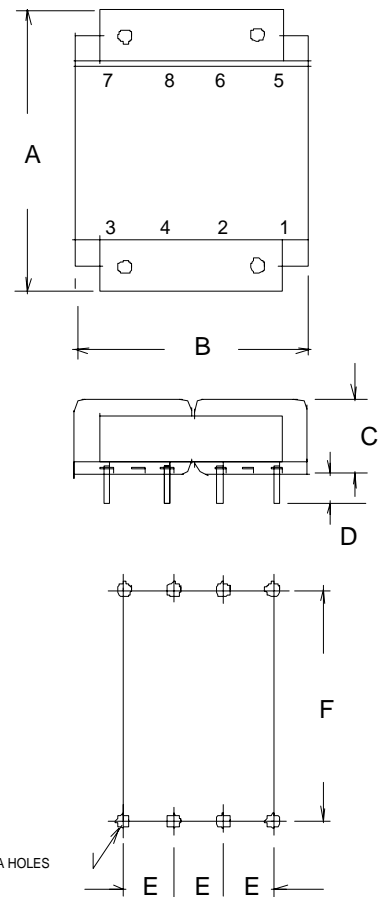
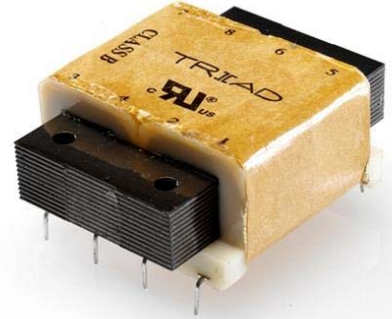
Units: In inches

Weight: 11.0 oz
Pin Dimension: .020 x .041 in


Schematic:



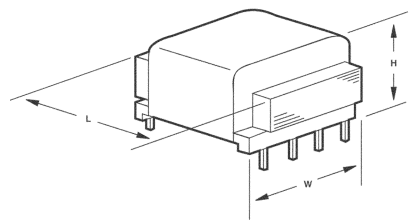
RoHS Compliance: As of manufacturing date February 2005, all standard products meet the requirements of 2002/95/EC, known as the RoHS initiative.



Power Transformers

Class B
UL Recognized

UL File E53148

PC Mount: Flat Pack™



:: Description

The Triad Flat pack power transformer is designed to meet the needs of lower clearance PC board and solid state power designs. These units can also be used for control and instrumentation applications. Voltages and currents were chosen for widely used power applications. It is offered in a dual primary and dual secondary configuration.

:: Specifications

Primary: 115/230 V, 50/60 Hz | **Hi Pot Tested:** 2,000 VRMS | **Low Profile:** Allows 3/4" card spacing for 2.5 VA units; Allows 1" card spacing for 6 VA units; Allows 1 1/4" card spacing for 12 VA units; Allows 1 1/2" card spacing for 24 VA and 48 VA units.

:: Flat Pack

| Section | Type No. | VA | Secondary | | Dimensions | | | | | Wt. Oz. |
|-----------|------------------|--------------------|-------------------|----------------|-----------------|-------------|-------|-------|-------|---------|
| | | | Series | Parallel | H | W | L | A | B | |
| A | FP10-250 | 2.5 | 10.0V CT @ 0.25A | 5.0V @ 0.5A | 0.650 | 1.562 | 1.875 | 1.600 | 0.375 | 5 |
| | FP12-200 | | 12.6V CT @ 0.2A | 6.3V @ 0.4A | | | | | | |
| | FP16-150 | | 16.0 CT @ 0.15A | 8.0V @ 0.3A | | | | | | |
| | FP20-125 | | 20.0 CT @ 0.125A | 10.0V @ 0.25A | | | | | | |
| | FP24-100 | | 24.0 CT @ 0.1A | 12.0V @ 0.2A | | | | | | |
| | FP30-85 | | 30.0V CT @ 0.08A | 15.0V @ 0.16A | | | | | | |
| | FP34-75 | | 34.0V CT @ 0.075A | 17.0V @ 0.15A | | | | | | |
| | FP40-60 | | 40.0V CT @ 0.06A | 20.0V @ 0.12A | | | | | | |
| | FP56-45 | | 56.0V CT @ 0.045A | 28.0V @ 0.09A | | | | | | |
| | FP88-28 | | 88.0V CT @ 0.028A | 44.0V @ 0.056A | | | | | | |
| | FP120-20 | | 120.0V CT @ 0.02A | 60.0V @ 0.04A | | | | | | |
| | FP230-10 | | 230.0V CT @ 0.01A | 115.0V @ 0.02A | | | | | | |
| | B | | FP10-600 | 6.0 | | | | | | |
| FP12-475 | | 12.6V CT @ 0.475A | 6.3V @ 0.95A | | | | | | | |
| FP16-375 | | 16.0 CT @ 0.375A | 8.0V @ 0.75A | | | | | | | |
| FP20-300 | | 20.0 CT @ 0.3A | 10.0V @ 0.8A | | | | | | | |
| FP24-250 | | 24.0 CT @ 0.25A | 12.0V @ 0.5A | | | | | | | |
| FP30-200 | | 30.0V CT @ 0.2A | 15.0V @ 0.4A | | | | | | | |
| FP34-170 | | 34.0V CT @ 0.17A | 17.0V @ 0.34A | | | | | | | |
| FP40-150 | | 40.0V CT @ 0.15A | 20.0V @ 0.3A | | | | | | | |
| FP56-100 | | 56.0V CT @ 0.1A | 28.0V @ 0.2A | | | | | | | |
| FP88-65 | | 88.0V CT @ 0.065A | 44.0V @ 0.13A | | | | | | | |
| FP120-50 | | 120.0V CT @ 0.05A | 60.0V @ 0.1A | | | | | | | |
| FP230-25 | | 230.0V CT @ 0.025A | 115.0V @ 0.05A | | | | | | | |
| C | | FP10-1200 | 12.0 | | 10.0V CT @ 1.2A | 5.0V @ 2.4A | 1.062 | 2.000 | 2.500 | 2.000 |
| | FP12-950 | 12.6V CT @ 0.95A | | 6.3V @ 1.9A | | | | | | |
| | FP16-750 | 16.0 CT @ 0.75A | | 8.0V @ 1.5A | | | | | | |
| | FP20-600 | 20.0 CT @ 0.6A | | 10.0V @ 1.2A | | | | | | |
| | FP24-500 | 24.0 CT @ 0.5A | | 12.0V @ 1.0A | | | | | | |
| | FP30-400 | 30.0V CT @ 0.4A | | 15.0V @ 0.8A | | | | | | |
| | FP34-340 | 34.0V CT @ 0.34A | | 17.0V @ 0.68A | | | | | | |
| | FP40-300 | 40.0V CT @ 0.3A | | 20.0V @ 0.6A | | | | | | |
| | FP56-200 | 56.0V CT @ 0.2A | | 28.0V @ 0.4A | | | | | | |
| | FP88-130 | 88.0V CT @ 0.13A | | 44.0V @ 0.26A | | | | | | |
| | FP120-100 | 120.0V CT @ 0.1A | | 60.0V @ 0.2A | | | | | | |
| | FP230-50 | 230.0V CT @ 0.05A | | 115.0V @ 0.1A | | | | | | |
| | D | FP10-2400 | | 24 | 10.0V CT @ 2.4A | 5.0V @ 4.8A | | | | |
| FP12-1900 | | 12.6V CT @ 1.9A | 6.3V @ 3.8A | | | | | | | |
| FP16-1500 | | 16.0V CT @ 1.5A | 8.0V @ 3.0A | | | | | | | |
| FP20-1200 | | 20.0V CT @ 1.2A | 10.0V @ 2.4A | | | | | | | |
| FP24-1000 | | 24.0V CT @ 1.0A | 12.0V @ 2.0A | | | | | | | |
| FP30-800 | | 30V CT @ 0.80mA | 15.0V @ 1.6A | | | | | | | |
| FP34-700 | | 34V CT @ 0.70mA | 17.0V @ 1.4A | | | | | | | |
| FP40-600 | | 56V CT @ 0.60mA | 20.0V @ 1.2A | | | | | | | |
| FP56-425 | 56V CT @ 0.425mA | 28.0V @ 0.85A | | | | | | | | |
| E | FP10-4800 | 48 | 10V CT @ 4.8A | 5.0V @ 9.6A | 1.375 | 2.5 | 3.12 | 2.18 | 0.600 | 21 |
| | FP12-3800 | | 12.6V CT @ 3.8A | 6.3V @ 7.6A | | | | | | |
| | FP16-3000 | | 16V CT @ 3.0A | 8.0V @ 6.0A | | | | | | |
| | FP20-2400 | | 20.0V CT @ 2.4A | 10.0V @ 4.8A | | | | | | |
| | FP24-2000 | | 24.0V CT @ 2.0A | 12.0V @ 4.0A | | | | | | |
| | FP30-1600 | | 30.0V CT @ 1.6A | 15.0V @ 3.2A | | | | | | |
| | FP34-1400 | | 34.0V CT @ 1.4A | 17.0V @ 2.8A | | | | | | |
| | FP40-1200 | | 40.0V CT @ 1.2A | 20.0V @ 2.4A | | | | | | |
| FP56-850 | 56.0V CT @ 0.85A | 28.0V @ 1.7A | | | | | | | | |

CT = Center Tap

:: Outline Dimensions

Technical Notes

1. Hi-pot tested at 2,000 VRMS.
2. Split bobbin with side-by-side windings to reduce capacitance and eliminate the need for a static shield.

